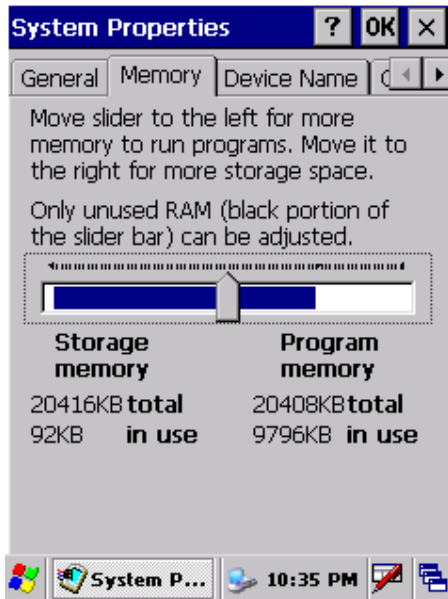


1 Install UltiMax Service Unit SW from SD Card

In UltiMax- go in the UltiMax to My device/control panel/system/memory you will see this screen, please make sure that the harrow is in middle position like it shown in the slide below.




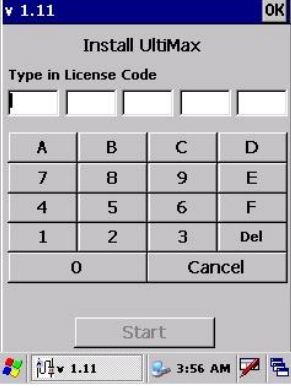




Press Ok for save..

1.1 Service Terminal Installation

NOTE! To avoid compatibility issues, we strongly advise, before installing UltiMax Service Unit, to make a backup of existing database and remove all older version of the SW.

NOTE! In most cases, it is recommended to install the SW from SD card, rather then from the PC.


<ol style="list-style-type: none">1. Switch UltiMax Service Unit on2. Insert SD Card in SD Slot3. Double tap on <i>My Device</i> icon on the screen\Storage Card	<ol style="list-style-type: none">4. Double tap on <i>Storage Card</i>

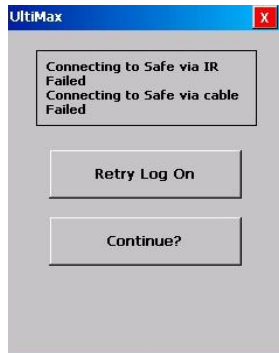
	
<p>5. Double tap on the file <i>SD_UltiMax 1.xx_Setup</i></p>	<p>6. Key in your License Code and tap <i>Start</i></p>
	
<p>7. Tap <i>Yes</i></p>	<p>8. This means an older UltiMax Service Unit version is present. It will be removed before the new one is installed. Tap <i>OK</i> to proceed</p>
	
<p>10. Tap <i>No</i> to keep the existing (old) user database (password) in UltiMax Service Unit. 11. Tap <i>Yes</i> if you want to set up new users and configuration</p>	<p>12. The UltiMax Service Unit SW was successfully installed, tap <i>OK</i> to proceed.</p>

2 Starting UltiMax Service Unit Program

The UltiMax Service Unit SW is automatically started by UltiMax Service Unit shortcut button.

Double click UltiMax Service Unit icon on screen

			
<p>If this is the first installation of any UltiMax Service Unit SW on the device or you selected to overwrite or not use old database, the screen to the left will be displayed. Type in a 4 digit password. The default password will be 9999 ,after you log in (offline or online via IR), you need to add the 2 passwords for Main User (its selected by the Hotel Manager or the selected responsible person of the hotel) The password are:</p> <ol style="list-style-type: none">1) The first password is used for log in to UltiMax SW2) The second password is used for override procedure			
<p>Both passwords need to be reconfirmed. Make sure you remember these Passwords and keep these passwords securely. The Main User Password needs to be kept securely and should only be used by the person responsible for administrating users. If this password is lost, the SW needs to be re-installed (see chapter 1), afterwards a new password will be needed.</p>			



When this menu appears, select *Retry Log On* or *Continue* (if you want to work offline)



Either option leads to this log in screen:
Log on with your own selected Main User password if this is the first time anyone use UltiMax Service Unit SW.
Or
Log on with any password added in the previous installed UltiMax Service Unit